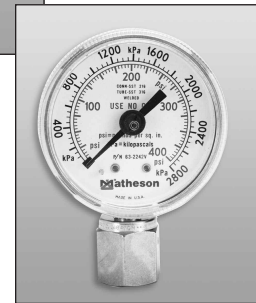
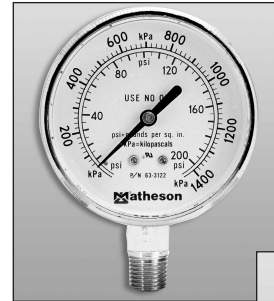




Standard Pressure Gauges



Description

Standard Gauges

Matheson offers a wide variety of gauges suitable for most laboratory and pilot plant operations. All of the gauges offered by Matheson are constructed with the inlet located on the bottom of the gauge and are cleaned for oxygen service.

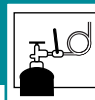
Matheson has adopted a dual unit measurement system for the majority of the gauges supplied. These gauges indicate both psig and kPa units of measure.

All accuracies are stated as a percentage of the full scale reading of the gauge. Brass and Monel gauges are accurate to $\pm 3\%$ for the first third of the scale, $\pm 2\%$ for the middle third of the scale and $\pm 3\%$ for the last third of the scale. All stainless steel gauges are accurate to $\pm 1\%$ full scale and are heliarc welded tube to socket. All stainless steel VCR inlet gauges are VCR female butt welded from the connection to the socket.

The operating temperature range for standard gauges is from -40°F to 140°F (-40°C to 60°C).

Test Gauges

These gauges are accurate to $\pm 0.25\%$ of full scale. Typically, these gauges are used to monitor critical process equipment within a facility. For ease of reading, they are 6" in diameter with very precise and incremental measurement graduations and mirrored scales. Construction is Monel and operating temperature range is from -20°F to 150°F (-30°C to 66°C). All gauges are cleaned for oxygen service.



Standard Gauges (continued)

Ordering Information

Standard Gauges - Chrome Plated Brass

| Range psig (kPa) | 1-1/2" Diameter 1/8" MPT Model No. | 2-1/2" Diameter 1/4" MPT Model No. | 4" Diameter 1/4" MPT Model No. |
|------------------------|--|--|--------------------------------------|
| 5-0-760 mmHg | N/A | N/A | 63-4110 |
| 0-10-30 retard (0-200) | N/A | N/A | 63-4111 |
| 0-35"wc (0-9) | N/A | 63-3103 | N/A |
| 0.1-3 (1-20) | N/A | 63-3130 | N/A |
| 0-15 Acetylene | N/A | 63-3106 | N/A |
| 0-15 (0-100) | N/A | 63-3115 | N/A |
| -30"-0-15 (-100-100) | N/A | N/A | 63-4102 |
| 0-30 (0-200) | 63-1131 | 63-3131 | N/A |
| -30"-0-30 (-100-200) | N/A | 63-3104 | N/A |
| 0-60 (0-400) | 63-1161 | 63-3161 | N/A |
| -30"-0-60 (-100-400) | N/A | 63-3109 | N/A |
| 0-100 (0-700) | 63-1112 | 63-3112 | N/A |
| 0-200 (0-1400) | N/A | 63-3122 | N/A |
| -30"-0-200 (-100-1400) | N/A | 63-3107 | N/A |
| 0-400 (0-2800) | N/A | 63-3142 | N/A |
| 0-1000 (0-7000) | N/A | 63-3113 | N/A |
| 0-2000 (0-14,000) | N/A | 63-3123 | N/A |
| 0-3000 (0-21,000) | 63-1133 | 63-3133 | N/A |
| 0-4000 (0-28,000) | N/A | 63-3143 | N/A |
| 0-5000 (0-35,000) | N/A | 63-3153 | N/A |
| 0-7500 (0-49,000) | N/A | 63-3175 | N/A |

Shipping Weight: 1 lb

Standard Gauges - 316 Stainless Steel

| Range psig (kPa) | 2" Diameter 1/4" MPT Model No. | 2" Diameter 1/4" FVCR Model No. | 2-1/2" Diameter 1/4" MPT Model No. |
|------------------------|--------------------------------------|---------------------------------------|--|
| 0-15 (0-100) | 63-2215 | N/A | N/A |
| -30"-0-30 (-100-200) | 63-2204 | 63-2204V | 63-3704 |
| -30"-0-60 (-100-400) | 63-2206 | 63-2206V | N/A |
| 0-100 (0-700) | 63-2212 | 63-2212V | 63-3212 |
| -30"-0-100 (-100-700) | 63-2216 | N/A | N/A |
| -30"-0-200 (-100-1400) | 63-2207 | 63-2207V | N/A |
| -30"-0-300 (-100-2000) | 63-2208 | N/A | N/A |
| 0-400 (0-2800) | 63-2242 | 63-2242V | N/A |
| 0-600 (0-4200) | 63-2262 | N/A | 63-3262 |
| 0-1000 (0-7000) | 63-2213 | 63-2213V | N/A |
| 0-3000 (0-21,000) | 63-2233 | 63-2233V | 63-3233 |
| 0-10000 (0-70,000) | N/A | N/A | 63-3214 |

Shipping Weight: 1 lb

Standard Gauges - Monel

| Range psig (kPa) | 2-1/2" Diameter 1/4" MPT Model No. |
|---------------------|--|
| 0-30 (0-200) | 63-3331 |
| 0-60 (0-400) | 63-3361 |
| 0-100 (0-700) | 63-3312 |
| 0-300 (0-2100) | 63-3332 |
| 0-1000 (0-7000) | 63-3313 |
| 0-3000 (0-21,000) | 63-3333 |

Shipping Weight: 1 lb

Test Gauges - Monel

| Range psig (kPa) | 6" Diameter 1/4" MPT Model No. |
|--|--------------------------------------|
| 760 mmHg-0 Absolute (0 to -100 kPa) | 63-5601M |
| 0-14 (0-100) | 63-5615M |
| 0-60 (0-400) | 63-5661M |
| 0-100 (0-700) | 63-5612M |
| 0-200 (0-1400) | 63-5622M |
| 0-3500 (0-25,000) | 63-5633M |

Shipping Weight: 2 lbs